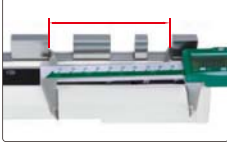


## CALIPER/HEIGHT GAGE CHECKERS

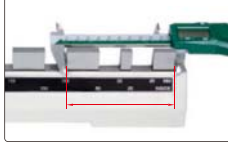


- To check calipers and height gages
- Constructed with steel gage blocks

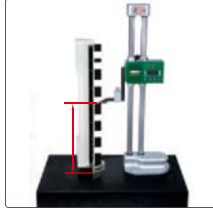
check upper jaws of caliper



check lower jaws of caliper



check height gage



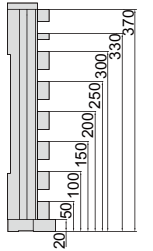
horizontal

vertical



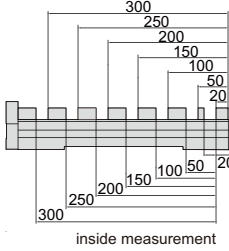
6884-300

height measurement



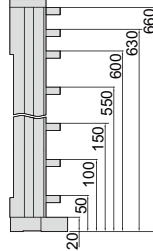
6884-300

outside measurement



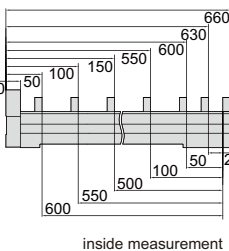
inside measurement

height measurement



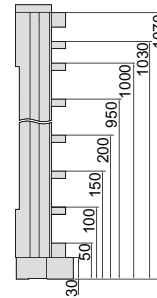
6884-600

outside measurement



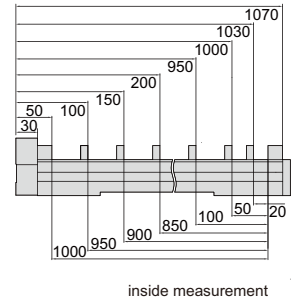
inside measurement

height measurement



6884-1000

outside measurement



inside measurement

Unit: mm

Code	Size	Range of inside measurement	Range of outside measurement	Range of height measurement	Accuracy
6884-300*	0-300mm	20,50,100,150,200,250,300	20, 50, 100, 150, 200, 250, 300	20,50,100,150,200,250,300,330,370	±5μm
6884-600*	0-600mm	20,50,100,150,200,250,300,350,400,450,500,550,600	20,50,100,150,200,250,300,350,400,450,500,550,600,630,660	20,50,100,150,200,250,300,350,400,450,500,550,600,630,660	±7μm
6884-1000*	0-1000mm	20,50,100,150,200,250,300,350,400,450,500,550,600,650,700,750,800,850,900,950,1000	30,50,100,150,200,250,300,350,400,450,500,550,600,650,700,750,800,850,900,950,1000,1030,1070	30,50,100,150,200,250,300,350,400,450,500,550,600,650,700,750,800,850,900,950,1000,1030,1070	±7μm

(mm)

\* Supplied with manufacturer inspection certificate

## INSIDE MICROMETER ACCESSORIES



6884-A3

- Supplied with a pair of 5mm carbide gage blocks, ISO3650 grade 0

Code	Applicable caliper/height gage checker
6884-A3*	0-300mm
6884-A6*	0-600mm
6884-A10*	0-1000mm

\* Supplied with manufacturer inspection certificate

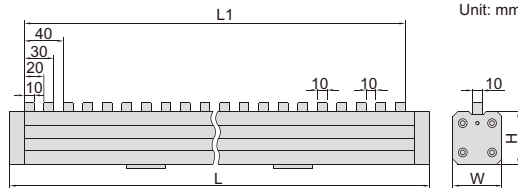
set inside micrometer



## CHECK MASTERS



- To check the accuracy of table movement of machine tools, to calibrate height gages and CMMs
- Ceramic gage blocks
- Can be used in either vertical and horizontal orientation
- Supplied with manufacturer inspection certificate



Unit: mm

(mm)

Code	Range	Step	Accuracy	Parallelism of blocks	L	L1	H	W
6882-300A	300mm	10mm	±2.5μm	1.2μm	350	310	49	45
6882-450A	450mm	10mm	±3.5μm	1.5μm	510	470	54	50
6882-600A	600mm	10mm	±3.5μm	1.5μm	650	610	54	50



6882-600A



horizontal orientation



vertical orientation